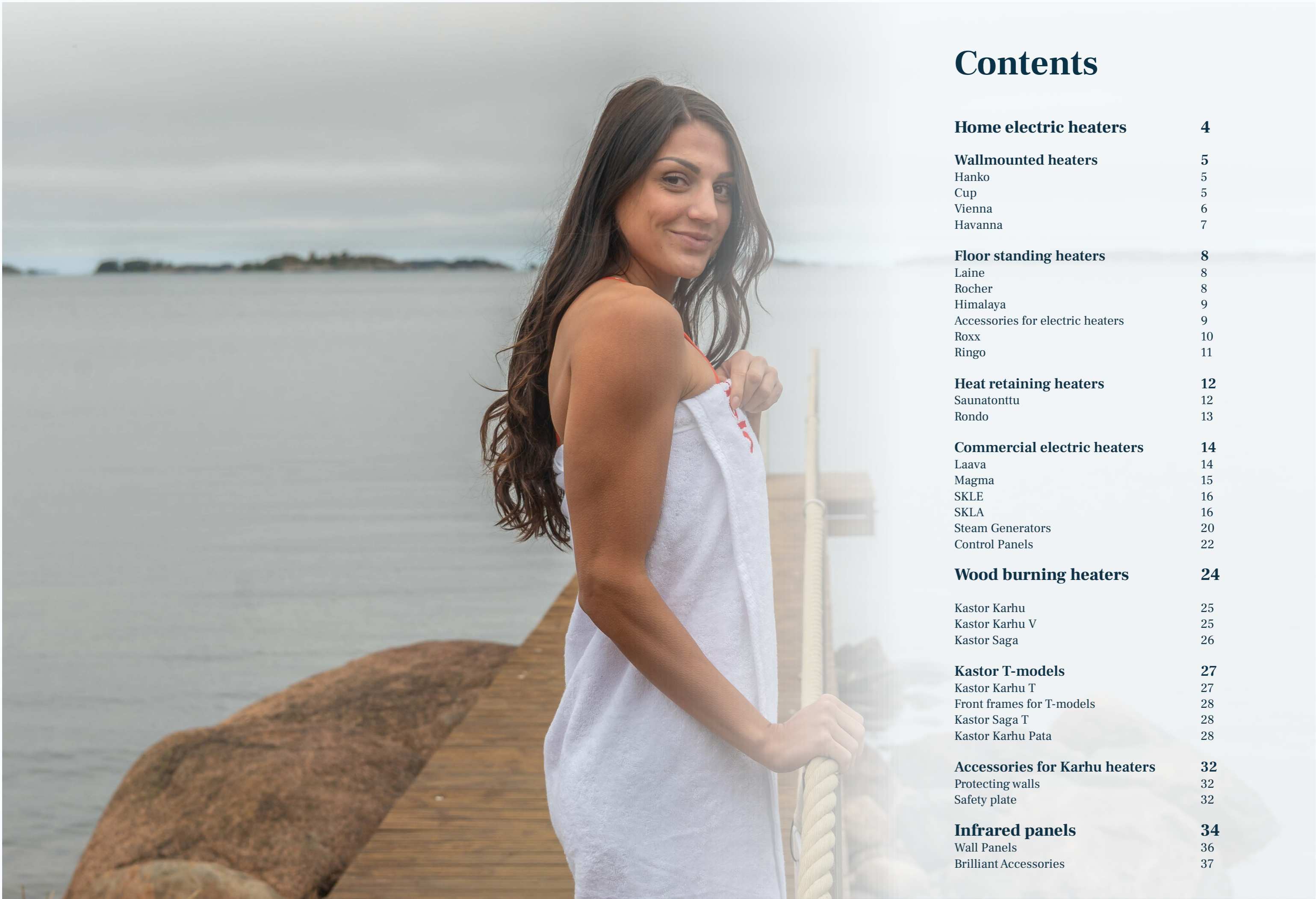


THE GENUINE FINNISH SAUNA

Step into the elemental story



helo KASTOR



Contents

Home electric heaters	4
Wallmounted heaters	5
Hanko	5
Cup	5
Vienna	6
Havanna	7
Floor standing heaters	8
Laine	8
Rocher	8
Himalaya	9
Accessories for electric heaters	9
Roxx	10
Ringo	11
Heat retaining heaters	12
Saunatonnttu	12
Rondo	13
Commercial electric heaters	14
Laava	14
Magma	15
SKLE	16
SKLA	16
Steam Generators	20
Control Panels	22
Wood burning heaters	24
Kastor Karhu	25
Kastor Karhu V	25
Kastor Saga	26
Kastor T-models	27
Kastor Karhu T	27
Front frames for T-models	28
Kastor Saga T	28
Kastor Karhu Pata	28
Accessories for Karhu heaters	32
Protecting walls	32
Safety plate	32
Infrared panels	34
Wall Panels	36
Brilliant Accessories	37

Home electric heaters



Wallmounted heaters

Hanko

The Hanko electric heater, a compact and modern design, ensures a comfortable and soothing sauna experience, fitting perfectly into smaller spaces. Designed by top experts, it accommodates 32kg of stones for a cozy sauna session, while its lightweight build and easy installation process stem from high-quality manufacturing.

With CE certification, it efficiently heats saunas ranging from 5 to 12 cubic meters. Available in various models, such as the Hanko STJ with an integrated thermostat, upper limit reset, and a timer offering 3 + 9 hours duration. Additionally, it's available in Black & Chrome colour options, catering to different preferences and needs.



Cup

The Wall Mounted Cup electric heater stands as a timeless classic among electric heaters, renowned for its enduring popularity due to its timeless design, durability, and user-friendly nature. Ideal for small to normal-sized sauna rooms, it holds 23kg of stones, providing a gentle sauna experience, while being lightweight and easy to install for quick room heating.

It bears the Finnish touch of safety and professionalism, ensuring reliability with Finnish Helo. CE-marked, it efficiently warms saunas ranging from 3 to 14 cubic meters. Available in different models—Cup STJ with integrated controls and a timer, and Cup D requiring additional components—it's a testament to quality and reliability. Available in color Graphite.



Vienna



The Vienna Black electric heater is a modern and stylish option for sauna rooms, offering innovation and versatility. It's wall-mounted, freeing up space, and holds 12-20kg of stones, allowing for varied sauna experiences. CE-marked and suitable for saunas from 3 to 13 cubic meters, it provides efficient warmth and gentle steam. There are different models available: Vienna STS with integrated controls, Vienna D requiring additional components, and Vienna STS-WT with enhanced humidity features, allowing lower temperatures and the use of fragrances. It's a quality product from Helo, with over a century of Finnish expertise. Available in color Black.

VIENNA STS -model has integrated controls. A timer in the 9-hour preselection range and 0-3 hours of heating time.

VIENNA D -model requires a separately purchased combination of WE relay box + Pure / Elite Free control panel.



Havanna

The Havana electric heater stands as an innovative pioneer among electric heaters, blending versatile features and modern aesthetics while maintaining the renowned reliability of Finnish Helo quality. Its adaptable stone spaces offer three levels: 20, 28, or 35 kg of stones, allowing for personalized heat experiences. With fewer stones, the sauna room heats rapidly, while increased stones create softer, more enjoyable steam.

Each Havana electric heater is CE-marked, efficiently providing gentle warmth and steam for saunas spanning 3 to 13 cubic meters.

Available in Black, the Havana series presents different models: **HAVANNA STS**: Integrated controls with a built-in thermostat and 8 + 4-hour timing.

HAVANNA STS-WT: Similar controls to the STS model, featuring a water tank that acts as a passive evaporator, generating more humid air for a more comfortable sauna experience at lower temperatures. It also allows the use of milk-based fragrances.

HAVANNA D: Requires a separately purchased combination of WE relay box + Pure / Elite Free control panel.

Product	Item no.	Colour choice. Item no.	Output (kW)	Sauna volume (m ³)	Weight rocks (kg)		Size (WxHxD)	Side (mm)	Front (mm)	Ceiling (mm)	Floor (mm)	Suitable control panel	Installation
Hanko 60 STJ Black	000205	Chrome 000201	6.0	5-9	32		365x575x250	70	100	1300	100	Built-in, mech. Timer & Thermo	Wall mounted
Hanko 80 STJ Black	000206	Chrome 000202	8.0	8-12	32		365x575x251	70	100	1300	100	Built-in, mech. Timer & Thermo	Wall mounted
Hanko 60 D Black	000214	Chrome 000210	6.0	5-9	32		365x575x252	70	100	1300	100	WE-30 + Pure / Elite Free	Wall mounted
Hanko 80 D Black	000215	Chrome 000211	8.0	8-12	32		365x575x253	70	100	1300	100	WE-40 + Pure / Elite Free	Wall mounted
Cup 45 STJ, graphite	004706		4.5	3-6	15		410x580x280	50	80	1200	120	Built-in, mech. Timer & Thermo	Wall mounted
Cup 60 STJ, graphite	004707		6.0	5-9	23		410x580x280	70	100	1250	120	Built-in, mech. Timer & Thermo	Wall mounted
Cup 80 STJ, graphite	004708		8.0	8-13	23		410x580x300	100	150	1250	120	Built-in, mech. Timer & Thermo	Wall mounted
Cup 45 D, graphite	004701		4.5	3-6	15		410x580x280	50	80	1200	120	WE-30 + Pure /Elite Free	Wall mounted
Cup 60 D, graphite	004702		6.0	5-9	23		410x580x280	70	100	1250	120	WE-30 + Pure /Elite Free	Wall mounted
Cup 80 D, graphite	004703		8.0	8-13	23		410x580x300	100	150	1250	120	WE-40 + Pure / Elite Free	Wall mounted
Vienna 45 STS, black	000545		4.5	3-6	12		420x615x270	40	60	1200	110	Built-in, mech. Timer & Thermo	Wall mounted
Vienna 60 STS, black	000509		6.0	5-9	20		420x615x270	60	80	1200	110	Built-in, mech. Timer & Thermo	Wall mounted
Vienna 80 STS, black	000510		8.0	8-12	20		420x615x270	80	100	1200	110	Built-in, mech. Timer & Thermo	Wall mounted
Vienna 60 STS Helo-WT, black	000533		6.0	5-9	20		420x615x270	60	80	1200	110	Built-in, mech. Timer & Thermo	Wall mounted
Vienna 80 STS Helo-WT, black	000534		8.0	8-12	20		420x615x270	80	100	1200	110	Built-in, mech. Timer & Thermo	Wall mounted
Vienna 450 D, black	000520		4.5	3-6	12		400x615x270	40	60	1200	110	WE-30 + Pure /Elite Free	Wall mounted
Vienna 600 D, black	000521		6.0	5-9	20		400x615x270	60	80	1200	110	WE-30 + Pure /Elite Free	Wall mounted
Vienna 800 D, black	000522		8.0	8-12	20		400x615x270	80	100	1200	110	WE-40 + Pure / Elite Free	Wall mounted
Havanna 60 STS Helo-WT black	005844		6.0	5-9	20-35		495x580x300	45	100	1100	120	Built-in, mech. Timer & Thermo	Wall mounted + Floor standing
Havanna 60 STS black	005824		8.0	8-12	20-35		495x580x300	75	130	1100	150	Built-in, mech. Timer & Thermo	Wall mounted + Floor standing
Havanna 90 STS black	005846		9.0	9-13	20-35		495x580x300	80	150	1100	150	Built-in, mech. Timer & Thermo	Wall mounted + Floor standing
Havanna 90 STS black	005826		9.0	9-13	20-35		495x580x300	80	150	1100	150	Built-in, mech. Timer & Thermo	Wall mounted + Floor standing
Havanna 450 D	005830		4.5k	2-6	20-35		475x580x300					WE-30 + Pure /Elite Free	Wall mounted + Floor standing
Havanna 600 D Helo-WT black	005847		6.0	5-9	20-35		475x580x300	45	100	1100	120	WE-30 + Pure /Elite Free	Wall mounted + Floor standing
Havanna 600 D black	005831		8.0	8-12	20-35		475x580x300	75	130	1100	150	WE-30 + Pure /Elite Free	Wall mounted + Floor standing
Havanna 900 D Helo-WT black	005849		9.0	9-13	20-35		475x580x300	80	150	1100	150	WE-40 + Pure / Elite Free	Wall mounted + Floor standing
Havanna 900 D black	005833		9.0	9-13	20-35		475x580x300	80	150	1100	150	WE-40 + Pure / Elite Free	Wall mounted + Floor standing



Floor standing heaters



Laine



Radiating elegance and sophistication, the Laine heater boasts a sleek design that seamlessly complements any sauna interior. The Laine heater offers versatility, serving as an ideal solution for both wall hanging and floor standing setups. Laine has integrated controls Timer 3+9h, Thermostat and high limit with reset. Additionally, there's an optional D model available, equipped with a separate control panel and relay box.

Installation of the Laine heater is swift and straightforward. With detailed instructions provided, the process ensures ease and precision.

Rocher



Rocher electric heater, a marvel of design that not only captivates the eyes but also offers a delightful sauna experience with its 100 kg of stones. Installed on the floor, this heater can seamlessly integrate into sauna benches.

CE-marked for quality assurance, each Rocher electric heater efficiently warms sauna rooms ranging from 5 to 15 cubic meters, ensuring a consistently warm and soft steam. Available in Chrome, Rocher Pure/Elite models include the Pure or Elite control panel.

Himalaya



The Himalaya electric heater, featuring 100 kg of stones, provides a gentle and soothing sauna bath, reflecting the safe and professional touch of Finnish craftsmanship.

Each Himalaya electric heater is CE-marked, ensuring quality and offers efficiently warm and soft steam for sauna rooms ranging from 5 to 15 cubic meters.

Himalaya Pure/Elite models include the Pure or Elite control panel and are equipped with WT (Water Tank) technology. The water tank acts as a passive evaporator, enhancing humidity in the sauna for a more enjoyable experience at lower temperatures (55-60°C). This technology also allows the use of milk-based fragrances.

Accessories for electric heaters

Product	Item no.	Use	Dimensions (mm)
Black glass collar	0038436	Laine	630 x 8 x 510
Glass collar	0038437	Rocher/Himalaya	610 x 8 x 610
Stainless collar	0038430	Rocher/Himalaya	600 x 7 x 600
Black collar	0038431	Rocher/Himalaya	600 x 7 x 600
Glass collar black	0038438	Himalaya	600 x 8 x 600
Railing Rocher 1-4	7860005	Rocher	149 x 28 x 478
Railing Himalaya 1-4	7860006	Himalaya	570 x 35 x 570

Roxx



The Roxx electric heater embodies modern design and spacious stone capacity, catering to group of sauna experiences. Positioned on the floor, it seamlessly integrates with sauna benches.

The Roxx WT-models feature a distinctive water tank amid the heater resistors, acting as a passive evaporator that enhances humidity within the sauna, allowing for lower temperature enjoyment (55-60°C), creating a warmer sensation on the skin and facilitating easier breathing. Additionally, it accommodates the use of milk-based fragrances.

With 38kg of stones, the Roxx heater ensures a gentle sauna session, reflecting the secure and professional Finnish craftsmanship of Helo.

CE-marked, every Roxx model offers efficient, soft steam for saunas between 5 to 13 cubic meters. Available in Black, the Roxx Pure/Elite models come equipped with the Pure or Elite control panel for added convenience.

Ringo



The Ringo electric heater, crafted for Finnish family saunas, efficiently produces heat with its 70 kg sauna stone capacity and attractive pillar-like design.

Ringo WT-models are equipped with a water tank amid the heater resistors, enhancing humidity within the sauna space. This feature not only allows for a lower temperature sauna experience (55-60°C) but also provides a warmer sensation on the skin and easier breathing. Additionally, it supports the use of milk-based fragrances.

Each Ringo electric heater is CE-marked, offering efficient, gentle steam for sauna rooms ranging from 5 to 13 cubic meters. This heater, reflecting Finnish Helo quality with over a century of experience, accommodates diverse needs.

Available in Black, the Ringo series includes models like Ringo STJ with an integrated thermostat and timer, while Ringo STJ HELO-WT boasts an integrated Helo-WT water tank alongside the thermostat and timer.

Product	Item no.	Output (kW)	Sauna volume (m³)	Weight rocks (kg)	Size (WxHxD)	Side (mm)	Front (mm)	Back (mm)	Ceiling (mm)	Floor (mm)	Suitable control panel	Installation
Laine 6 STJ Black	000640	6	5 - 9		330x860x315	60	100		1040		Built-in, mech. Timer & Thermo	Wall mounted + Floor standing
Laine 8 STJ Black	000641	8	8 - 12		330x860x315	80	120		1040		Built-in, mech. Timer & Thermo	Wall mounted + Floor standing
Laine 9 STJ Black	000642	9	9 - 13		330x860x315	100	150		1040		Built-in, mech. Timer & Thermo	Wall mounted + Floor standing
Laine 6 D Black	000644	6	5-9		330x860x315	70	100		1040		WE-30 + Pure /Elite Free	Wall mounted + Floor standing
Laine 8 D Black	000645	8	8-12		330x860x315	80	120		1040		WE-40 + Pure /Elite Free	Wall mounted + Floor standing
Laine 9 D Black	000646	9	9-13		330x860x315	100	150		1040		WE-40 + Pure /Elite Free	Wall mounted + Floor standing
ROCHER 70 Pure brushed steel	002735	6.8	5-9	100	425x1130x425	60	60	60	770	0	Pure included	Floor standing
ROCHER 105 Pure brushed steel	002736	10.5	9-15	100	425x1130x425	60	60	60	770	0	Pure included	Floor standing
ROCHER 70 Elite brushed steel	002730	6.8	5-9	100	425x1130x425	60	60	60	770	0	Elite Free included	Floor standing
ROCHER 105 Elite brushed steel	002731	10.5	9-15	100	425x1130x425	60	60	60	770	0	Elite Free included	Floor standing
HIMALAYA 70 Pure Helo-WT black	001930	6.8	5-9	100	330x1030x330	60	60	60	870	0	Pure included	Floor standing
HIMALAYA 105 Pure Helo-WT black	001931	10.5	9-15	100	330x1030x330	60	60	60	870	0	Pure included	Floor standing
HIMALAYA 70 Elite Helo-WT black	001900	6.8	5-9	100	330x1030x330	60	60	60	870	0	Elite Free included	Floor standing
HIMALAYA 105 Elite Helo-WT black	001902	10.5	9-15	100	330x1030x330	60	60	60	870	0	Elite Free included	Floor standing
HIMALAYA 702 D-WT	001920	6,8	5-9	100	330x1030x330	60	60	60	870	0	Not available	Floor mounted
HIMALAYA 1052 D-WT	001922	10.5	9-15	100	330x1030x330	60	60	60	870	0	Not available	Floor mounted
Roxx 60 Pure Helo-WT graphite	002935	6.0	5-10	38	490x830x280	100	300	-	1070	0	Pure included	Wall mounted + floor standing
Roxx 90 Pure Helo-WT graphite	002936	9.0	9-13	38	490x830x280	100	350	-	1070	0	Pure included	Wall mounted + floor standing
Roxx 60 Elite Helo-WT graphite	002875	6.0	5-10	38	490x830x280	100	300	-	1070	0	Elite Free included	Wall mounted + floor standing
Roxx 90 Elite Helo-WT graphite	002876	9.0	9-13	38	490x830x280	100	350	-	1070	0	Elite Free included	Wall mounted + floor standing
Ringo Black 60 STJ Helo-WT black	005862	6.0	5-9	70	367x750x367	100	100	100mm	1150	0	Built-in, mech. Timer & Thermo	Floor standing
Ringo Black 80 STJ Helo-WT black	005863	8.0	8-13	70	367x750x367	100	100	100mm	1150	0	Built-in, mech. Timer & Thermo	Floor standing



Heat retaining heaters



Saunatonnttu



The Saunatonnttu heater is a European-designed, multi-patented innovation acclaimed as the world's top sauna heater. It boasts a unique feature with 100 kg of stones stored in a well-insulated chamber, maintaining continuous heat for extended periods. When water is poured on the stones, it releases soft, abundant, and indulgent steam. Developed in collaboration with renowned designer Risto-Matti Ratia. This Finnish-designed heater allows for flexible sauna interior design due to its small safety distances and corner model structure that easily mounts to sauna benches.

Offering consistent and efficient heat, the Saunatonnttu's optimized insulation maximizes usability comfort and permits sauna use without preheating. Its minimal protective distance requirement allows flexible placement within the sauna, with a relatively cool surface. Equipped with a convenient controller for heater settings, its heat-retaining stones enable immediate use without preheating. The included OLEA 63 controller enhances its usability.

CE-marked, the Saunatonnttu series caters to sauna rooms of 7-17 m³, presenting an energy-efficient choice for active sauna enthusiasts. Available in Black, its outstanding insulation ensures extended steam and heat retention within the sauna, eliminating the need for preheating.

Rondo



The Rondo is a round-shaped, "ready-to-use" heater designed to effectively retain heat. With a patented 360-degree rotating lid, it offers innovative possibilities for sauna interior design. Featuring a generous 100 kg stone space, it provides gentle and moist sauna experiences.

This heat-reserving heater ensures even and efficient heat distribution while prioritizing user comfort. Its optimized insulation shell retains heat exceptionally well, allowing for immediate sauna enjoyment without the need for preheating. The heater's surface remains relatively cool, enabling flexible placement within the sauna with minimal protective distance. Unique with its 360° rotating lid, the Rondo facilitates easy water throwing from any direction. Its efficient insulation allows spontaneous sauna use without preheating, maintaining low and efficient maintenance power.

Equipped with an automated control unit attachable to the wall, every Rondo electric heater is CE-marked, catering to sauna rooms between 7-18 m³. Available in Graphite, it stands as an energy-efficient choice for active sauna enthusiasts, ensuring prolonged heat retention and steam within the sauna space.

Product	Item no.	Output (kW)	Sauna volume (m ³)	Weight rocks (kg)	Size (WxHxD)	Side (mm)	Front (mm)	Back (mm)	Ceiling (mm)	Floor (mm)	Suitable control panel	Installation
Saunatonnttu 6 black	002701	6.4	7-14	100	500x1090x500	30	30		800	0	Control panel Olea 63 included	Floor standing
Saunatonnttu 8 black	002706	8.0	9-17	100	500x1090x500	30	30		800	0	Control panel Olea 63 included	Floor standing
Rondo 65 graphite	002907	6.5	7-13	90	500x860x500	50	50	50	1040	0	Control panel RA19 included	Floor standing
Rondo 96 graphite	002908	9.6	10-18	90	500x860x500	50	50	50	1040	0	Control panel RA19 included	Floor standing

Commercial electric heaters

Laava



Introducing the Laava, a robust free-standing heater that has been an industry benchmark for over 25 years. Ideal for large sauna rooms and institutional setups, the Laava heater's efficiency is unmatched, with a generous stone capacity of up to 60 kg.

With top-notch design and technology, the Helo Laava ensures durability and classic aesthetics. If you seek a stove that performs consistently even in demanding conditions, choose Helo Laava. Operated with a separate combination of the WE40 relay box and Pure/Elite Free controller (not included in the price), this heater is a testament to more than 100 years of Finnish Helo quality.

CE-marked for quality assurance, the Laava electric heater provides efficiently warm and soft steam for sauna rooms ranging from 8 to 24 cubic meters. Available in Graphite Grey, it offers cost-effective energy use without compromising steam quality.

Magma



Massive, efficient, and cost-effective Magma electric heaters have enough force to steam a large group of bathers at the same time. Designed to meet very high requirements, Magma is a great choice for large sauna rooms and institutional saunas for public use. The large stone space of the Magma heater can hold up to 80kg of stones.

Durability, performance, and low maintenance are its key features. The Magma heater is operated with a separate combination of WE50 relay box and Pure/Elite Free controller. Pure / Elite Free + WE50 relay box is not included in the price.

Top quality design and technology guarantee a long-lasting, classic-looking heater. If you demand durability and efficiency from your stove even in demanding conditions, choose Helo Magma.

Every Magma electric heater is CE-marked and offers efficiently warm and soft steam for 18 up to 46 cubic meter sauna rooms.



SKLE

The freestanding SKLE heater has top tier efficiency and thus making it suitable for large, commercial-sized saunas with a lot of traffic. Digitally controlled for easy monitoring. Overall easy to use, low maintenance choice. The large stone space of the SKLE heater can hold up to 60 kg of stones.

The SKLE electric heater is operated with a separate combination of WE40 relay box and Pure/Elite Free controller. Pure / Elite Free + WE40 is not included in the price.

Every SKLE electric heater is CE-marked and offers efficiently warm and soft steam for 18 up to 46 cubic meter sauna rooms.



SKLA

The freestanding SKLA heater has top tier efficiency and thus making it suitable for large, commercial-sized saunas with a lot of traffic. Digitally controlled for easy monitoring. Overall easy to use, low maintenance choice. The large stone space of the SKLA heater can hold up to 80 kg of stones.

Top quality design and technology guarantee a long-lasting, classic-looking heater. If you demand durability and efficiency from your stove even in demanding conditions, choose Helo SKLA.

The SKLA electric heater is operated with a separate combination of WE50 relay box and Pure/Elite Free controller. Pure / Elite Free + WE50 is not included in the price.

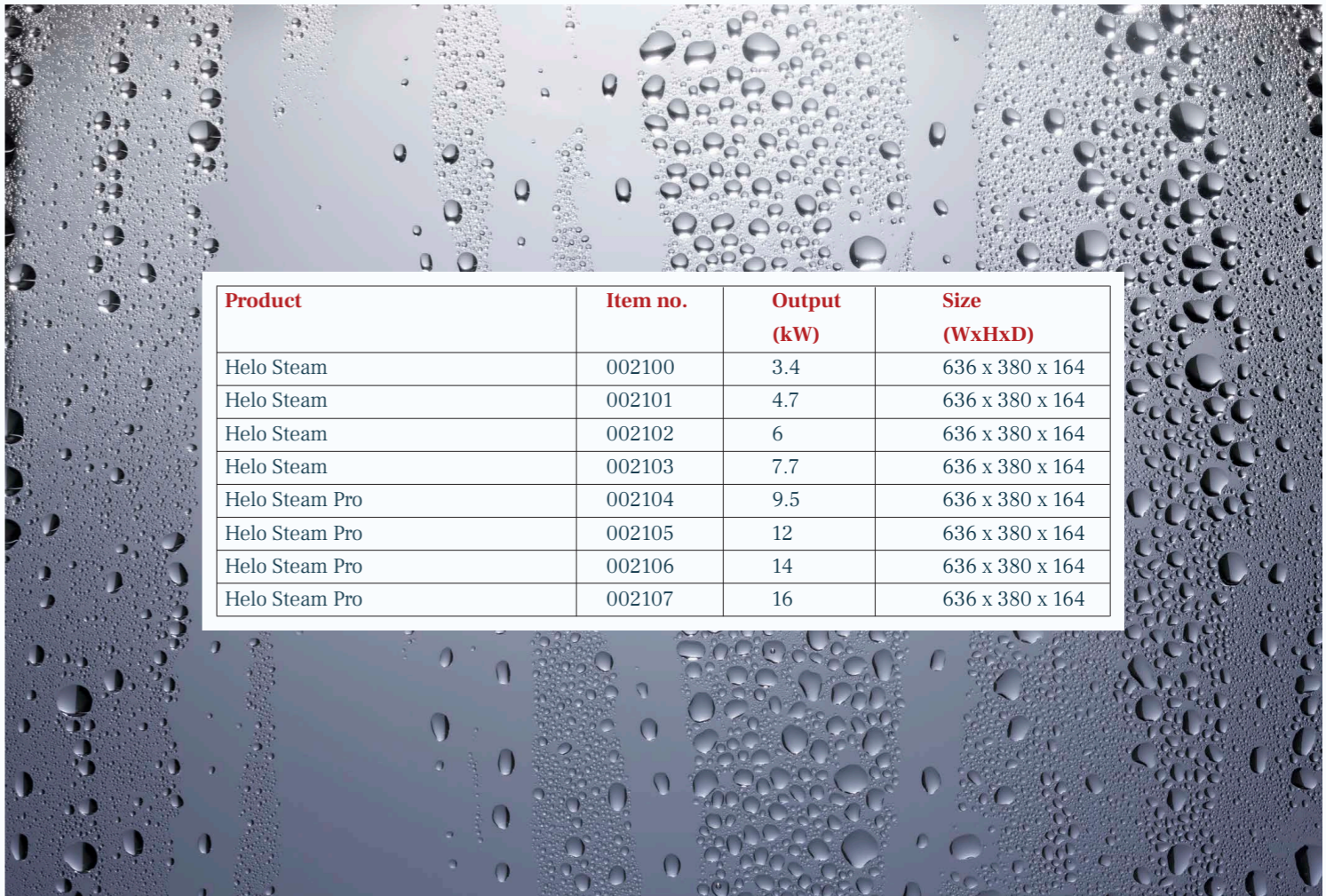
Every SKLA electric heater is CE-marked and offers efficiently warm and soft steam for 8 up to 46 cubic meter sauna rooms.



Product	Item no.	Output (kW)	Sauna volume (m ³)	Weight rocks (kg)	Size (WxHxD)	Side (mm)	Front (mm)	Back (mm)	Ceiling (mm)	Floor (mm)	Suitable control panel	Installation
Laava 901 graphite	000915	9.0	8-13	60	540x730x500	80	50	110	1200	0	WE-40 + Pure / Elite Free	Floor standing
Laava 1051 graphite	000916	10.5	9-15	60	540x730x500	80	50	110	1200	0	WE-40 + Pure / Elite Free	Floor standing
Laava 1201 graphite	000917	12.0	10-18	60	540x730x500	65	65	65	1350	0	WE-40 + Pure / Elite Free	Floor standing
Laava 1501 graphite	000918	15.0	14-24	60	540x730x500	65	65	65	1350	0	WE-40 + Pure / Elite Free	Floor standing
SKLE 901 chrome	000901	9.0	8-13	60	510x700x475	80	80	110	1200	0	WE-40 + Pure / Elite Free	Floor standing
SKLE 1051 chrome	000902	10.5	9-15	60	510x700x475	80	80	110	1200	0	WE-40 + Pure / Elite Free	Floor standing
SKLE 1201 chrome	000903	12.0	10-18	60	510x700x475	120	120	120	1400	0	WE-40 + Pure / Elite Free	Floor standing
SKLE 1501 chrome	000904	15.0	14-24	60	510x700x475	120	120	120	1400	0	WE-40 + Pure / Elite Free	Floor standing
Magma 181 graphite	000911	18.0	18-30	80	900x715x520	140	160	160	1400	0	WE-50 + Pure / Elite Free	Floor standing
Magma 210 graphite	000912	21.0	24-36	80	900x715x520	140	160	160	1400	0	WE-50 + Pure / Elite Free	Floor standing
Magma 260 graphite	000913	26.0	30-46	80	900x715x520	140	160	160	1500	0	WE-50 + Pure / Elite Free	Floor standing
Magma 262 graphite	000914	26.0	30-46	80	900x715x520	140	160	160	1500	0	WE-50 + Pure / Elite Free	Floor standing
SKLA 181 chrome	000905	18.0	18-30	80	880x700x510	140	160	160	1400	0	WE-50 + Pure / Elite Free	Floor standing
SKLA 210 chrome	000906	21.0	24-36	80	880x700x510	140	160	160	1400	0	WE-50 + Pure / Elite Free	Floor standing
SKLA 260 chrome	000907	26.0	30-45	80	880x700x510	140	160	160	1500	0	WE-50 + Pure / Elite Free	Floor standing
SKLA 262 chrome	000910	26.0	30-46	80	880x700x510	140	160	160	1500	0	WE-50 + Pure / Elite Free	Floor standing



Steam Generators



Product	Item no.	Output (kW)	Size (WxHxD)
Helo Steam	002100	3.4	636 x 380 x 164
Helo Steam	002101	4.7	636 x 380 x 164
Helo Steam	002102	6	636 x 380 x 164
Helo Steam	002103	7.7	636 x 380 x 164
Helo Steam Pro	002104	9.5	636 x 380 x 164
Helo Steam Pro	002105	12	636 x 380 x 164
Helo Steam Pro	002106	14	636 x 380 x 164
Helo Steam Pro	002107	16	636 x 380 x 164



Helo Steam

Engineered for minimal use of electricity and water but provide maximum enjoyment. A steam generator that suits residential use that comes with two aux outputs for fragrance or salt and resettable high limit switch.

Available add-ons are new drain valve and automatic flush.



Helo Steam Pro

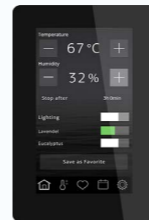
An advanced steam generator for commercial use with a lot of smart features included like; standby function, automatic flush, safety flush, two aux outputs for fragrance/salt, ganging with RJ connectors (1+2units), resettable high limit switch, new drain valve.

Push button for activation from standby is available as add-on.



Pure

Comes with the standard digital touch control panel for ease of use and convenience. Let's you set temperature and time.



Elite Free

Gives a quicker heat up time and lets you set the exact percentage of humidity for full control. Cloud connectivity for maximum advantage and comfort is included.

Accessories

FRAGRANCE PUMP

Available as an option for your steam generator and connects simply to the outlet pipe. Add any 5-litre concentrated fragrance. Item no. 0038130

CONTAINER FOR ESSENCE PUMP 20L

Item no. 0038132

ADAPTER FOR CONTAINER

Item no. 0038131



Control Panels



Pure

Control your sauna with a smart control panel. The Pure stands for simplicity and functionality. The elegant, compact design of the Pure control panel makes it the go-to choice for those who value functionality and simplicity.

The thin black control lets you set the lighting, temperature and sauna time easily with only a few touches. Of course, choosing the start time up to ten hours in advance means you can step into a wonderfully hot sauna or steam as soon as you get home. (Door switch is included with Pure control panel.)



Elite Free

The new control panel Elite Free has been updated with cloud based functionality so you can control your sauna from anywhere! Why not have it ready when you come in from the ski slope or an exhausting car ride on the way home from work.

It is packed with advanced features, thanks to its internal processor and operating system. In addition to highly personalized settings, the Elite Free can be individually programmed according to your own schedule.

Add features such as auxiliary fans, fragrance pumps or lights – the Elite Free control panel handles it all with clear and concise precision. The 4.5-inch touch screen delivers real-time status on every aspect of your sauna and steam bath. Door switch is included with Elite Free control panel to ensure the cloud functionality.



Wood burning heaters



Kastor Karhu

The stylish lines and chrome front panel of the wood burning heater Kastor Karhu are suitable for all sauna interiors. Intelligent solutions produce maximum heating power with as little wood as possible and have impressive heat storage properties. Kastor Karhu is a CE-marked stove.

Kastor Karhu heaters have different models suitable from 12 up to 40 cubic meter sauna rooms:

KARHU HOME: 8-20m³ sauna rooms

KARHU 22: 12-22m³ sauna rooms

KARHU 30: 20-30m³ sauna rooms

KARHU 40: 30-40m³ sauna rooms

All Kastor Karhu heaters have adjustable legs, and the inside diameter of the flue is 115 mm. A protective wall and a protective base are available as accessories.



Kastor Karhu V

The wood burning Kastor Karhu V -model heaters have integrated water tank that is located at the right, left or front of the heater. Kastor Karhu V -heaters have suitable models for 12-40 cubic meter sauna rooms.

The stylish lines and chrome front panel of the wood burning heater Kastor Karhu are suitable for all sauna interiors. Intelligent solutions produce maximum heating power with as little wood as possible and have impressive heat storage properties. Kastor Karhu is a CE-marked stove.

All Kastor Karhu heaters have adjustable legs, and the inside diameter of the flue is 115 mm. A protective wall and a protective base are available as accessories. What could be more relaxing than watching the blaze of flames in the warmth of the atmospheric Kastor Karhu?

Kastor Karhu V -heaters can be easily identified from these abbreviations:

-VV: Water tank located on the left side

-VO: Water tank located on the right side



Kastor Saga



The wood burning heater Kastor Saga and its praiseworthy stone amount of 130/180kg provides wave after wave the softest, most comfortable heat while reserving heat effectively. Its forged steel bars are made to last for years of flawless performance.

The rugged style of Kastor Saga makes it an eye-catcher and a centrepiece for your sauna interior. The Saga heater guarantees the perfect atmosphere for your sauna – it is the brand of Finland’s oldest sauna industry leader after all.

Every Kastor Saga heater is CE-marked. Kastor Saga -series offers efficiently warm and soft steam for 12-30 cubic meter sauna rooms. The inside diameter of the flue is 115 mm.

A chimney basket and protective base are available as an accessory.

Kastor Karhu T



Kastor Karhu T -heater: A fireplace heater also known as a tunnel heater, is a combination of a wood heater and a fireplace, where the heater is in the sauna and the fireplace door on the other side of the wall. So, you can first enjoy the steam on the sauna side and continue the atmosphere by the fireplace in the fireplace room, dressing room or living room. The fireplace located outside the sauna also heats the spaces outside the sauna and keeps the sauna clean when the debris coming from the firewood does not end up on the sauna floor.

In addition to practicality, of course, the heater looks great. The beautiful lines of the heater are suitable for many tastes and sauna interiors. The careful design of the firebox and stone space makes the heater light without compromising on its excellent fire properties.

Every Kastor Karhu T- heater is CE-marked, has adjustable legs and has 115 mm inner flue diameter. Kastor Karhu T -heaters have different models suitable from 12 up to 30 cubic meter sauna rooms.

The frame is not included in the price of the Kastor Karhu 22/30 T models. Available as an accessory.





Front Frames For T-Models

Front frames are mainly designed to be used in T-model tunnel heaters. The frames are easy to install and is a finishing touch to the style of your home.

The sleek and modern design of the front frames complements the overall look of the Kastor Karhu T and Kastor Saga T models. The frame is not included in the price of the Kastor Karhu 22/30 T models. Available as an accessory.

Kastor Saga T

Kastor Saga T -heater: A fireplace heater also known as a tunnel heater, is a combination of a wood heater and a fireplace, where the heater is in the sauna and the fireplace door on the other side of the wall. So, you can first enjoy the steam on the sauna side and continue the atmosphere by the fireplace in the fireplace room, dressing room or living room. The fireplace located outside the sauna also heats the spaces outside the sauna and keeps the sauna clean when the debris coming from the firewood does not end up on the sauna floor.

The wood burning heater Kastor Saga T and its praiseworthy stone amount of 140/190kg provides wave after wave the softest, most comfortable heat while reserving heat effectively.

Every Kastor Saga T heater is CE-marked and offers efficiently warm and soft steam for 12 up to 30 cubic meter sauna rooms. The inside diameter of the flue is 115mm. Saga T does not include the front frame, a stone basket or a protective base. They are available purchase as an accessory.

Kastor Karhu Pata

Wood-burning water kettle Kastor Karhu Pata is designed to complement other wood-burning stoves in the Karhu collection.

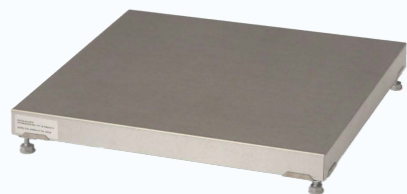
Kastor Karhu Pata has a large 60-liter water tank and adjustable legs. A protective base is available as an accessory.



Product	Item no.	Output (kW)	Sauna volume (m ³)	Weight heater +rocks(kg)	Size (mm)	Side (mm)	Front (mm)	Ceiling (mm)	Back (mm)	Water tank volume (Lt)	Sauna room min height (mm)	Max.lengt of fire wood (mm)
Karhu Home	084152	12	8-20	45 + 35-40	435 x 475 x 730	300	500	1300	300	-	2100	380
Karhu 22	289083	14	12-22	61 + 25-30	450 x 485 x 785	300	500	1240	300	-	2100	380
Karhu 30	289086	17	20-30	84 + 35-40	490 x 485 x 915	300	500	1310	300	-	2300	380
Karhu 40	289091	15	30-40	125 + 50-55	580 x 585 x 925	300	500	1300	300	-	2300	450
Karhu 22 VO	289084	14	12-22	67 + 25-30	620 x 485 x 785	300 / 150	500	1240	300	28	2100	380
Karhu 22 VV	289085	14	12-22	67 + 25-30	620 x 485 x 785	300 / 150	500	1240	300	28	2100	380
Karhu 30 VO	289087	17	20-30	90 + 35-40	660 x 485 x 915	300 / 150	500	1310	300	28	2300	380
Karhu 30 VV	289088	17	20-30	90 + 35-40	660 x 485 x 915	300 / 150	500	1310	300	28	2300	380
Karhu 40 VO	289092	15	30-40	131 + 50-55	740 x 585 x 925	300 / 150	500	1300	300	28	2300	450
Karhu 40 VV	289093	15	30-40	131 + 50-55	740 x 585 x 925	300 / 150	500	1300	300	28	2300	450
Karhu 22 T	289094	14	12-22	95 + 25-30	450 x 485/785 x 785	300	500	1240	50	-	2100	380
Karhu 30 T	289095	17	20-30	120 + 35-40	490 x 485/785 x 915	300	500	1310	50	-	2300	380
Karhu Pata	089650	15	-	-	410 x 570 x 775	500	500	1000	500	60		
Saga 22	289089	16	12-22	115 + 130-140	600 x 585 x 825	250	500	1400	250	-	2300	380
Saga 30	289090	17	20-30	140 + 180-190	675 x 585 x 930	250	500	1300	250	-	2300	380
Saga 22 T	289097	16	12-22	115 + 130-140	600 x 585 x 825	250	500	1400	50	-	2300	380
Saga 30 T	289098	17	20-30	140 + 180-190	675 x 585 x 930	250	500	1300	50	-	2300	380



Accessories for Karhu heaters



Safety Plates

The safety plate serves as protection for combustible floors, allowing for a reduction in the safety distance required for stove products.



Protecting panels

The protective walls minimize the required safety distance between the heater and the wall to prevent any risk of fire caused by radiating heat and ensure a safe sauna experience.

Product	Item no.	Dimensions (mm)
Karhu Home protective wall	289079	540 x 565 x 760
Karhu 20 ES protective wall	289081	540 x 770 x 760
Karhu 22 protective wall	289101	565 x 595 x 830
Karhu 22 VO/VV protective wall	289099	730 x 592 x 830
Karhu 30 protective wall	289049	610 x 595 x 970
Karhu 30 VO/VV protective wall	289100	770 x 595 x 970
Karhu 40 protective wall	289050	690 x 685 x 970
Karhu 40 VO/VV protective wall	289102	850 x 658 x 850
Safety plate (Karhu 20, Karhu 22, Karhu 30)	091004	532 x 50 x 532
Safety plate (Saga, Karhu 40, Karhu Pata)	289051	607 x 50 x 607
Front frame for T models chrome	091002	695 x 60 x 670
Front frame for T models black	098128	640 x 60 x 645



Infrared panels



Elevate the traditional sauna experience by incorporating infrared panels, allowing you to enjoy the deep heat they provide. Whether relishing the benefits of an infrared sauna individually or in conjunction with a traditional sauna, Helo's infrared panels can be seamlessly integrated into your existing sauna room.

Separately sold backrest grid, ensuring an appropriate distance between your back and the heating elements. This specific product, IR-panel B, comes in a sleek black color.



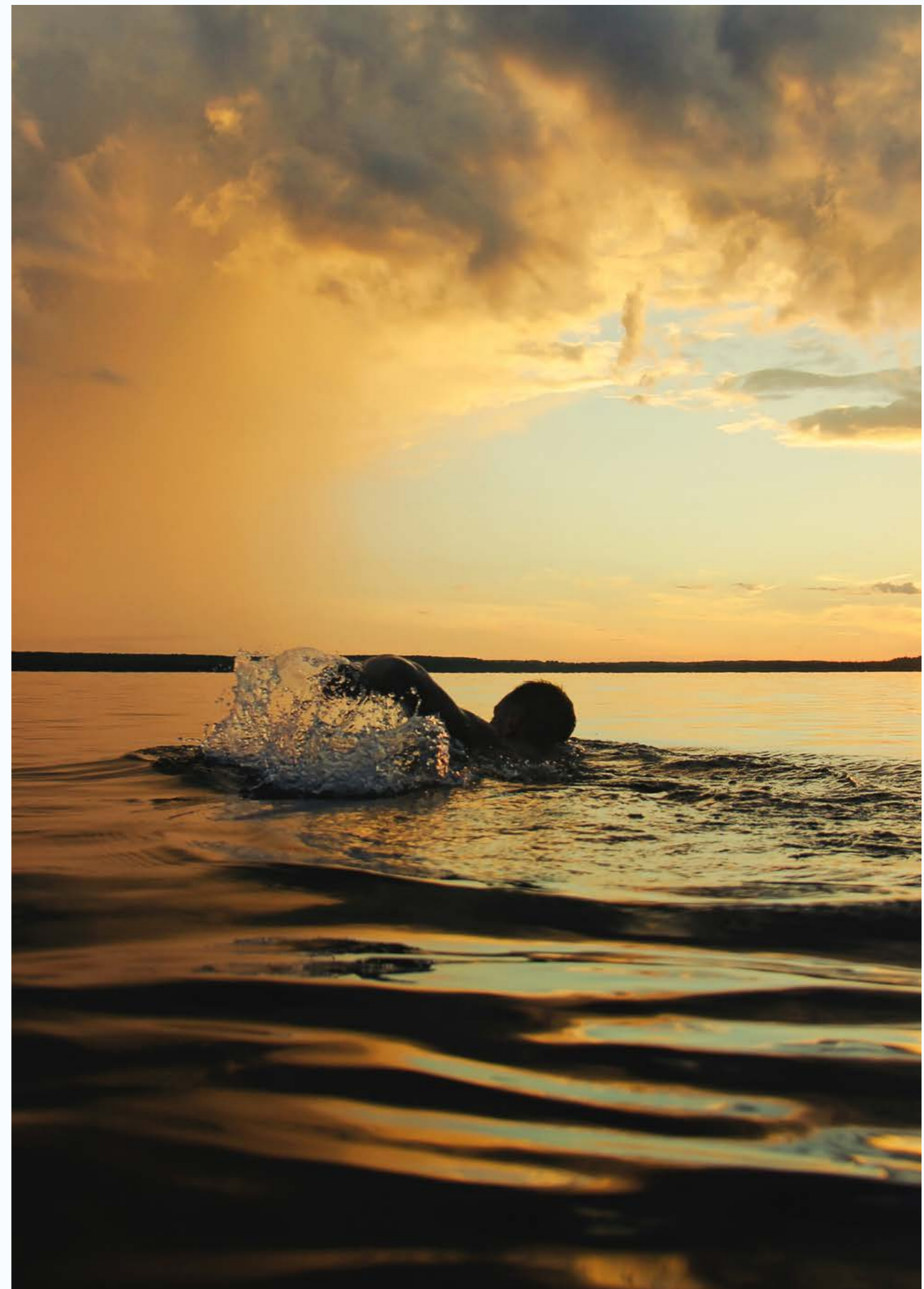
Key Features

Two sauna experiences in one room, for individual or simultaneous enjoyment. Infrared sauna health benefits stem from the profound warming effect of infrared heat on the body.

Invisible light waves penetrate the body in the infrared sauna, promoting increased metabolism, blood circulation, pain relief, calorie expenditure, skin improvement, stress reduction, and an overall sense of well-being.

Accelerates body recovery, making it an excellent support for an active lifestyle.

Product	Item no.	Size in mm	Power/ Voltage
Glass Infra panel, black	0038961	910 X 310 mm	900W, 230V
Glass Infra panel, grey	0038962	910 X 310 mm	900W, 230V
Backrest, vertical	0038971	382x809x59 mm	
Backrest, horizontal	0038972	980x330x59 mm	
Control panel 60 minutes	001560		





Wall Panels



Black

Brown

Grey

Natural

White

Taika panels are available in two different forms; horizontal and square and comes in a number of wood finishes.

Product	Size in mm	Item no.
Black	12 x 196 x 3030	0038608
White	12 x 196 x 3030	0038623
Natural	12 x 196 x 3030	0038633
Grey	12 x 196 x 3030	0038663
Brown	12 x 196 x 3030	0038672
Black	12 x 196 x 1500	0038668
White	12 x 196 x 1500	0038669
Natural	12 x 196 x 1500	0038670
Grey	12 x 196 x 1500	0038671
Brown	12 x 196 x 1500	0038674
Black	12 x 376 x 376	0038609
White	12 x 376 x 376	0038627
Natural	12 x 376 x 376	0038637
Grey	12 x 376 x 376	0038667
Brown	12 x 376 x 376	0038673



Brilliant Accessories



This new series has been developed in collaboration with Italian designer, Paola Garatto. The beautiful diagonal shape is inspired by the water waves. It includes bucket, ladle, thermometer, hygrometer and hourglass and is offered in beautiful matt Black or glamorous Silver grey.

It features aluminium which is anodised and sand-blasted for a real quality finish and longevity. The handle on the bucket is light birch, reinforced with aspen for strength.

In addition to the stylish design, the bucket has a clever functional spout to enable more accurate pouring of water - ideal for filling the water tank on Helo heaters.



Product	Item no.
BRILLIANT BLACK	
Bucket	3817036
Ladle	3817038
Hygrometer	3817051
Thermometer	3817049
Hourglass	3817026

Product	Item no.
BRILLIANT SILVER	
Bucket	3817037
Ladle	3817039
Hygrometer	3817052
Thermometer	3817050
Hourglass	3817027

helo KASTOR

THE GENUINE FINNISH SAUNA

Sauna360 Oy

Pohjoinen Pallbontie 1, 10900 Hanko
www.helosauna.com

SALES

Tel: +358 207 560 300
Email: sales.fi@sauna360.com

TECHNICAL SUPPORT AND AFTER SALES

Tel: +358 207 560 332
Email: aftersales.fi@sauna360.com